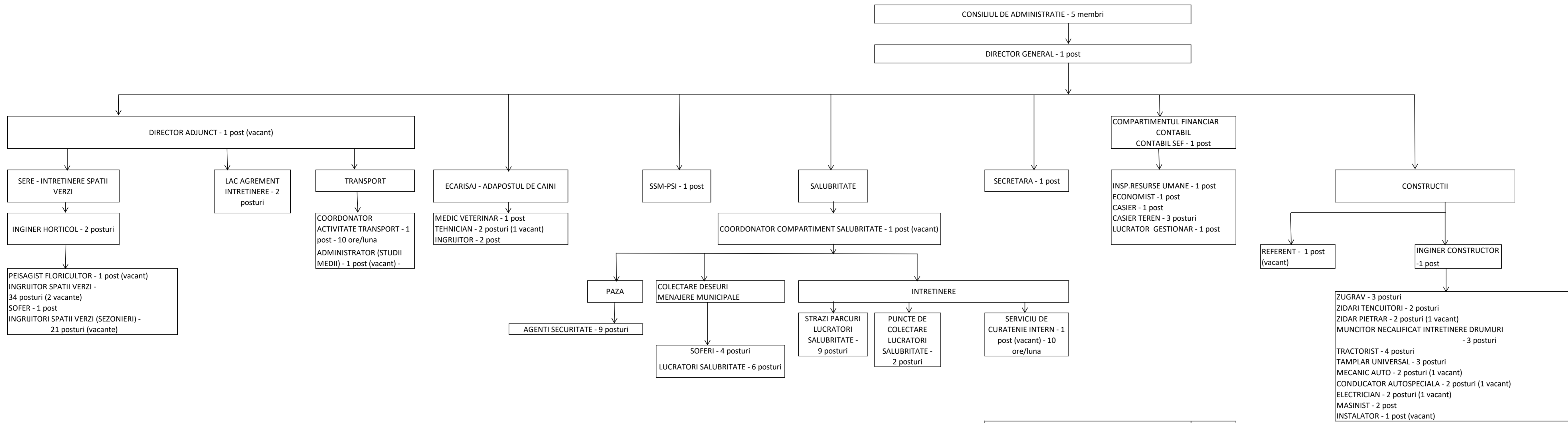


ORGANIGRAMA S.C. ADP GHERLA S.A.



TOTAL PERSONAL	145
CONSILIUL DE ADMINISTRATIE	5
PERSONAL CU FUNCTIE DE CONDUCERE	3
PERSONAL CU FUNCTIE DE EXECUTIE	102
POSTURI VACANTE	35